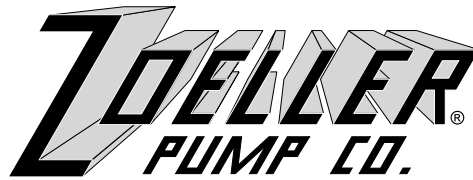


"QUALITY PUMPS SINCE 1939"

Product information presented here reflects conditions at time of publication. Consult factory regarding discrepancies or inconsistencies.



FM0940
1004
Supersedes
0394

MAIL TO: P.O. BOX 16347 • Louisville, KY 40256-0347
SHIP TO: 3649 Cane Run Road • Louisville, KY 40211-1961
(502) 778-2731 • 1 (800) 928-PUMP • FAX (502) 774-3624

visit our web site:
www.zoeller.com



ENGINEERING SPECIFICATIONS SHEET SUBMERSIBLE SEWAGE*/EFFLUENT PUMP 267 SERIES



MATERIAL SPECIFICATIONS:

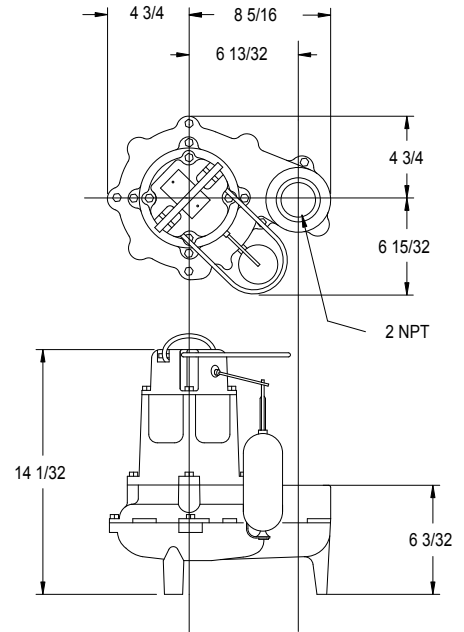
- Durable cast iron switch case, and pump housing.
- Engineered plastic impeller with metal inserts. Available with cast iron impeller option. (Cast iron impeller standard on 3 PH models).
- Cast Iron Base
- Motor - 1/2 HP, 60 cycle, 1725 RPM, 1 or 3 PH oil filled, hermetically sealed, automatic reset, thermal overload protected (1 PH).
- Cord - UL listed 3-wire neoprene cord and plug.
- 10' cord standard for automatic/15' cord standard for non-automatic.
- Shaft seal - Stainless steel, carbon & ceramic rotary.
- Stainless steel screws, bolts, handle, guard, and arm and seal assembly.
- Square Ring & Gasket - Neoprene.
- Bearings - Upper & lower oil fed cast iron.
- Corrosion resistant powder coated epoxy finish.

ENGINEERING FEATURES:

- Passes 2-inch spherical solids.
- Not effected by materials normally found in drainage and sewage sumps.
- Temperature to 130° F (54° C.).
- 2" NPT female vertical discharge.
- Non-Clogging Vortex Impeller Design.
- Variable level control systems available.

* May be used in those states where codes do not restrict solids size in effluent systems.

** See below for UL & CSA listings.



SK375



Certified to CSA
Standard C22.2 No. 108



Tested to UL
Standard UL778

267 MODELS			Control Selection				Listings	
Model	Volts	Phase	Mode	Amps	Simplex	Duplex	CSA	UL
M267	115	1	Auto	10.4	1	4	Y	Y
BN267**	115	1	Auto	10.4	**	4	Y	Y
N267	115	1	Non	10.4	2 or 3	2 or 4	Y	Y
D267	230	1	Auto	5.5	1	---	Y	Y
E267	230	1	Non	5.5	2 or 3	4	Y	Y
BE267**	230	1	Auto	5.5	**	---	Y	Y
H267	200-208	1	Auto	6.2	1	---	N	N
I267	200-208	1	Non	6.2	3	4	N	N
J267	200-208	3	Non	2.6	3	4	N	Y
F267	230	3	Non	2.6	3	4	N	Y
G267	460	3	Non	1.5	3	4	N	N

** Single piggyback switch included.

SELECTION GUIDE

1. Integral float operated mechanical switch, no external control required.
2. For automatic use single piggyback variable level float switch or double piggyback variable level float switch. Refer to FM0477.
3. See FM1228 for correct model of simplex control panel.
4. See FM0712 for correct model of duplex control panel or FM1663 for a residential alternator system.

